



GAT MONTHLY MEMBERSHIP PROGRESS REPORT

Results as of: 5/31/2023

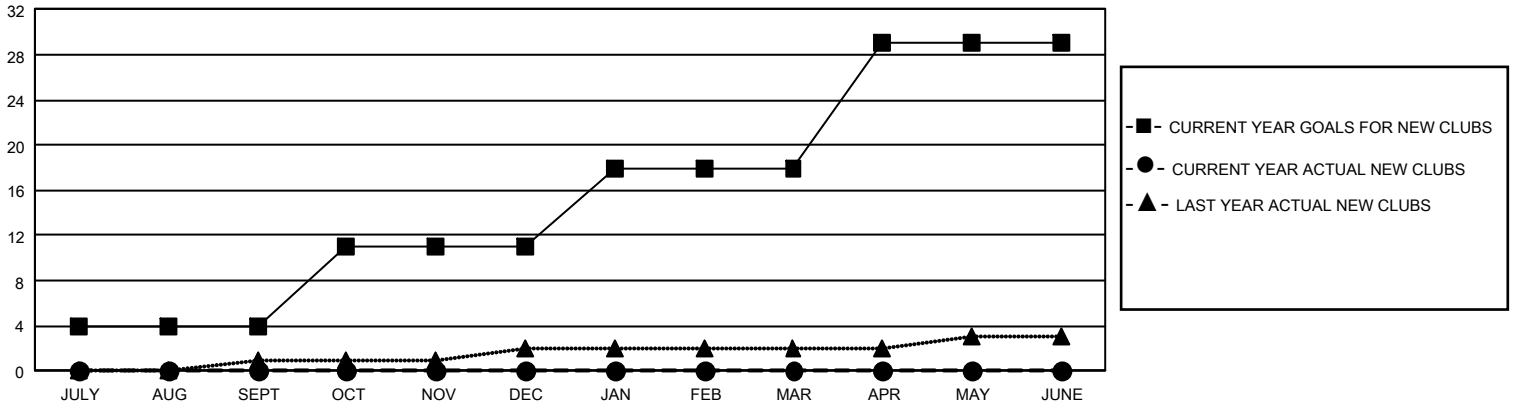
GMT Constitutional Area 1, Group E

REPORT DOES NOT INCLUDE CLUBS IN UNDISTRICTED AREAS.

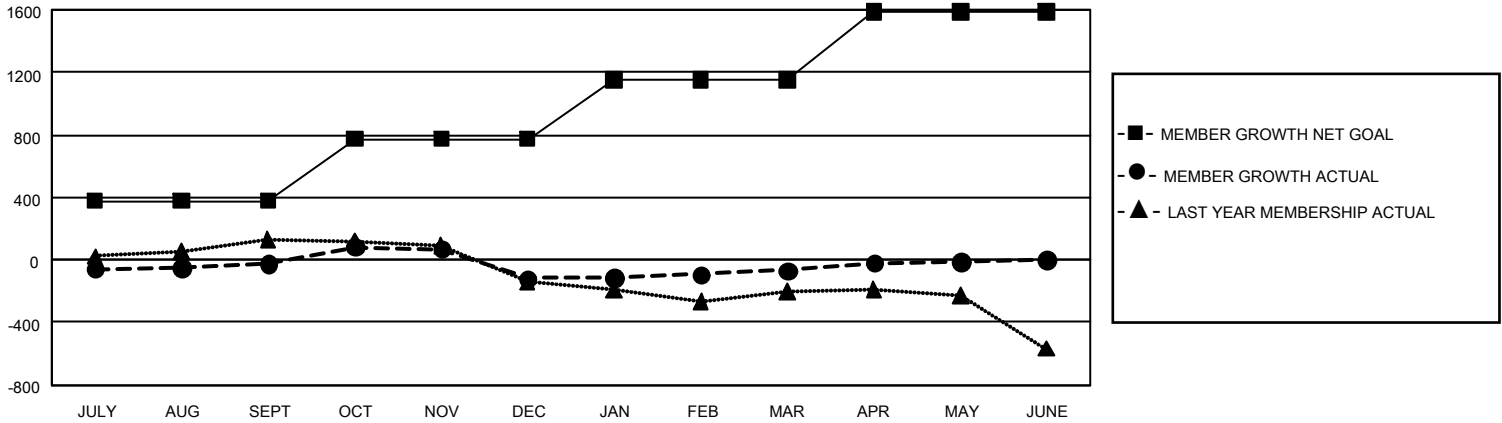
| Clubs | | | |
|-----------------------|---------------|-----------|---------------|
| RESULTS FOR 2022-2023 | | | |
| QUARTER | NEW CLUB GOAL | NEW CLUBS | DROPPED CLUBS |
| JULY/AUG/SEPT | 12 | 0 | 5 |
| OCT/NOV/DEC | 21 | 0 | 2 |
| JAN/FEB/MAR | 21 | 0 | 1 |
| APR/MAY/JUNE | 33 | 0 | 1 |

| Members | | | |
|-----------------------|------------------------|----------------------|--|
| RESULTS FOR 2022-2023 | | | |
| QUARTER | MEMBER GROWTH NET GOAL | MEMBER GROWTH ACTUAL | DROPPED MEMBERS ACTUAL (including transfers) |
| JULY/AUG/SEPT | 378 | 777 | 711 |
| OCT/NOV/DEC | 397 | 738 | 774 |
| JAN/FEB/MAR | 375 | 748 | 615 |
| APR/MAY/JUNE | 435 | 496 | 411 |

GOALS AND ACTUAL NEW CLUBS CUMULATIVE



GOALS AND ACTUAL MEMBERS CUMULATIVE



| | | | |
|--|--|---|--|
| DROPPED CLUBS: 9 | 629 CLUBS OF 1,003 ADDED 1 OR MORE NEW MEMBERS | GENDER DISTRIBUTION | |
| | | MALE 21,669 (70.98%) FEMALE 8,856 (29.01%) NON BINARY 0 (0.00%) PREFER NOT TO ANSWER 4 (0.01%) | |
| DROPPED MEMBERS | | CLICK HERE FOR CUMULATIVE MEMBERSHIP DATA | |
| DECEASED 435 CLUB CANCELLED 45 OTHER 2,031 TOTAL 2,511 | TOTAL FAMILY UNIT MEMBERS 5,534 FAMILY MEMBERS PAYING HALF DUES 2,823 | | |